

## Division B Anatomy Practice Test - Nervous & Integumentary Systems

Created by vennowsah

1. Identify the parts of the brain based on the diagrams on the right and write the names of the parts on the line next to the corresponding letter.

Diagram 1:

- a. \_\_\_\_\_
- b. \_\_\_\_\_
- c. \_\_\_\_\_
- d. \_\_\_\_\_
- e. \_\_\_\_\_
- f. \_\_\_\_\_
- g. \_\_\_\_\_
- h. \_\_\_\_\_
- i. \_\_\_\_\_
- j. \_\_\_\_\_
- k. \_\_\_\_\_
- l. \_\_\_\_\_

Diagram 1

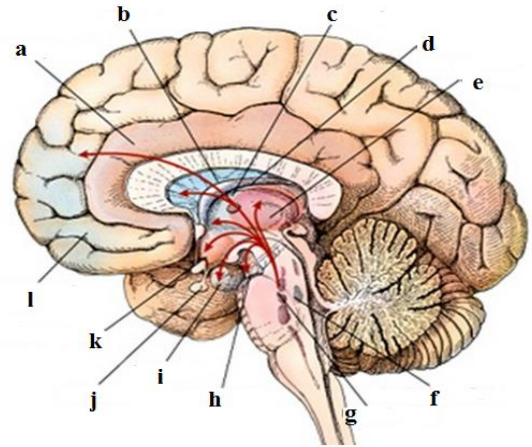
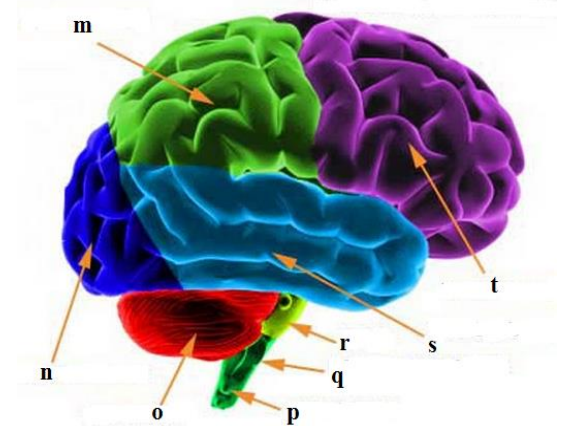


Diagram 2:

- m. \_\_\_\_\_
- n. \_\_\_\_\_
- o. \_\_\_\_\_
- p. \_\_\_\_\_
- q. \_\_\_\_\_
- r. \_\_\_\_\_
- s. \_\_\_\_\_
- t. \_\_\_\_\_

Diagram 2



2. What are the four types of brainwave patterns?

3. What is cerebrospinal fluid (CSF), and where is it produced?
  
  
  
  
  
  
  
  
  
  
4. What is the blood-brain barrier, and what does it consists of?
  
  
  
  
  
  
  
  
  
  
5. Which part of the brain helps regulate balance, gait, and posture?
  
  
  
  
  
  
  
  
  
  
6. The shallow grooves in the brain are called the \_\_\_\_\_, and the deep grooves in the brain are called the \_\_\_\_\_.
  
  
  
  
  
  
  
  
  
  
7. What is the function of the medulla?
  
  
  
  
  
  
  
  
  
  
8. The \_\_\_\_\_ influences subconscious, instinctive behavior.
  
  
  
  
  
  
  
  
  
  
9. What does the mamillary body do?
  
  
  
  
  
  
  
  
  
  
10. What are photoreceptors? What do they do?

11. Explain the process of hearing.
  
12. What are the three main parts of a neuron?
  
13. When a neuron is at its resting potential, it is \_\_\_\_\_.
  
14. How does nicotine affect the nervous system?
  
15. What are the effects of marijuana on the nervous system?
  
16. What are neuroglial cells? What do they do?
  
17. What are motor nerve tracts?
  
18. What are fascicles?

19. What virus is shingles caused by?

20. List the symptoms, and treatments for the following disorders:

**Alzheimer's disease:**

**Multiple Sclerosis:**

**Glaucoma:**

21. All layers of the epidermis are composed of \_\_\_\_\_ epithelial tissue.

22. What three layers of tissue is the integument composed of?

23. Skin cells produce \_\_\_\_\_, a fibrous protein that's an important component of the skin and the only component of hair and nails.

24. What are the five layers of the epidermis?

25. What is the stratum corneum? What is it composed of?

26. Where do apocrine sweat glands develop?

27. The two main types of skin glands are \_\_\_\_\_ and \_\_\_\_\_.

28. List three functions of the integument.

29. What are papillae?

30. What is the reticular region and what is it composed of?

31. What is the lunula?

32. What type of tissue is the hypodermis (subcutaneous layer) mainly composed of?

33. What is dermatitis?

34. What characterizes melanoma?

35. Label the parts of the skin based on the diagram on the right

- A. \_\_\_\_\_
- B. \_\_\_\_\_
- C. \_\_\_\_\_
- D. \_\_\_\_\_
- E. \_\_\_\_\_
- F. \_\_\_\_\_
- G. \_\_\_\_\_
- H. \_\_\_\_\_
- I. \_\_\_\_\_
- J. \_\_\_\_\_
- K. \_\_\_\_\_
- L. \_\_\_\_\_

