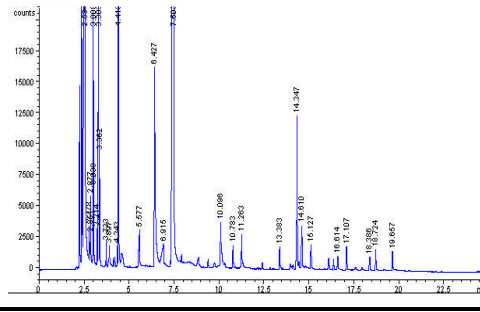


SECTION 1: Fingerprints (10 points possible)

CAUTION: There may be more than one matching print within the prints collected! There also may have been unknown prints collected from the various scenes that have no bearing on the case. At the time of collection, the CSI agents did not have prints to compare to, so they collected all prints found.

- 1 Whose fingerprints were found on the note?
(Exhibit #1) _____
- 2 Whose fingerprints were found on the steering
wheel? (Exhibit #2) _____
- 3 Whose fingerprints were found on the trunk lid?
(Exhibit #3) _____
- 4. Identify the following:
 - A Percent of population with Looped Prints _____
 - B. Percent on Population with Arched Prints _____
 - C Percent of population with Whirled Prints _____
- 5 How many ridges does the average
fingerprint contain? _____
- 6 How many comparative points are required
for a "positive ID? (Give me a range, if you
want) _____
- 7 What Does "AFIS" stand for, as it relates to
fingerprints? _____



SECTION 2: Chromotography

Suspects Emissions

Chromatography

(15 Points possible)

(Teams may use Isopropyl Alcohol and / or Water as a solvent)

- 8 Whose pen(s) could have been used to write the note, based on Chromatography? _____
- 9 Compare the suspect gas chromo at the top of the page with the previous page. What was the Vehicle Identification Number (VIN) of the suspects car _____

SECTION 3: Chemistry (40 Points Possible)

- 10 What type of fabric was found on the car door? (Exhibit #5) _____
- 11 What type of polymer was found on the floor of the front seat? (Exhibit #6) _____
- 12 What type of powder was found in the passenger's seat? (Exhibit #7) _____
- 13 What type of powder was found IN the trunk? (Exhibit #8) _____
- 14 What type of powder was found on the OUTSIDE of the trunk? (Exhibit #9) _____
- 15 What type of powder was found on the floor of the seat behind the driver's seat? (Exhibit #10) _____
- 16 What type of powder was found on the floor behind the passenger seat? (Exhibit #11) _____
- 17 What powder was found on the floor of the driver's seat? (Exhibit 12) _____
- 18 What polymer was found on the seat behind the passenger (Exhibit #13) _____
- 19 What Polymer was found on the seat behind the driver (Exhibit #14) _____
- 20 What type of powder was found by the lab? (Exhibit #15) _____

SECTION 4: Analytical Thinking (2 Points Each)

Assuming that all 4 suspects headed for the car at the same time, from the same location, identify the following:

18 Who first sat in the Driver's Seat?

19 Who was the last to sit in the Driver's Seat?

20 Who sat in the front passenger's seat?

21 Who sat in the rear behind the passenger?

22 Who ended up in the rear seat behind the Driver?

23 Who got in the car first?

24 Who got in the car second?

25 Who got in the car third?

26 Who was the last to get in the car?

27 Who put something in the trunk?

28 Who actually wrote the note?

29 Who lost their copy of the note?

30 Who do you believe owned the Car?

25. Questions 18 through 30 could potentially have more than one correct answer. By providing a solid logic path within your essay, you may receive additional points even if your conclusions don't match those intended.

ESSAY ANALYSIS (10 Points Possible):