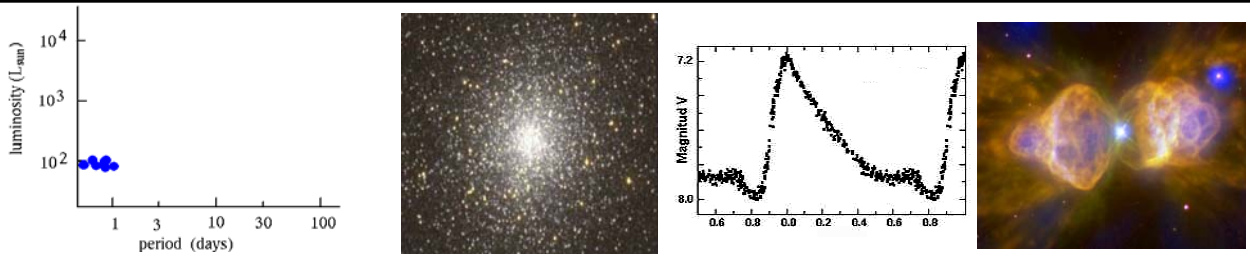
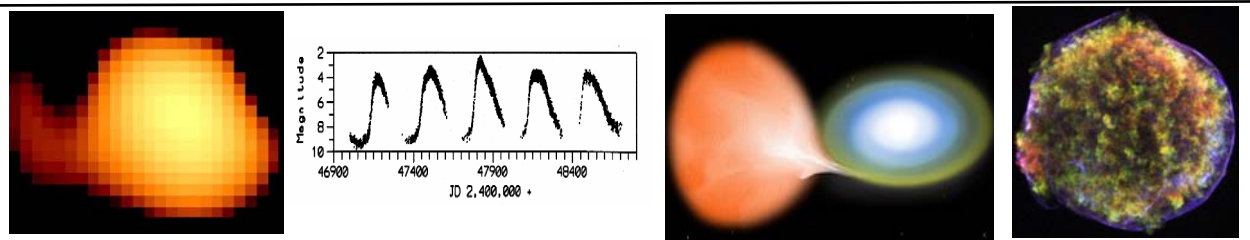


A



Question A: Why is this type of variable star an important astronomical tool?
Used to Measure Cosmological Distances to Nearby Galaxies

B



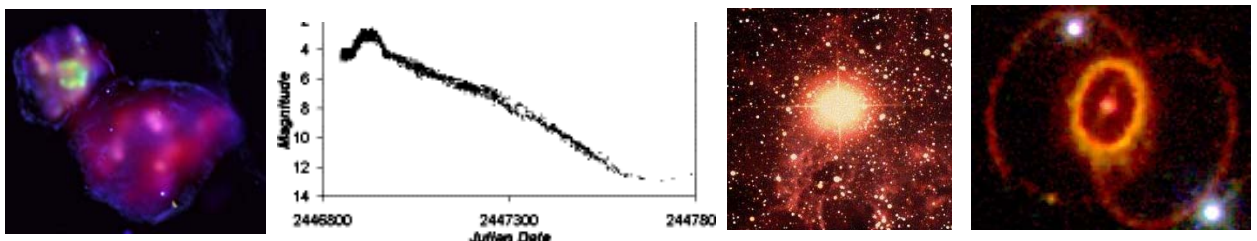
Question B: What general variable star type and event are shown in this sequence?
Long Period Variable; Type Ia Supernova (thermonuclear destruction White Dwarf)

C



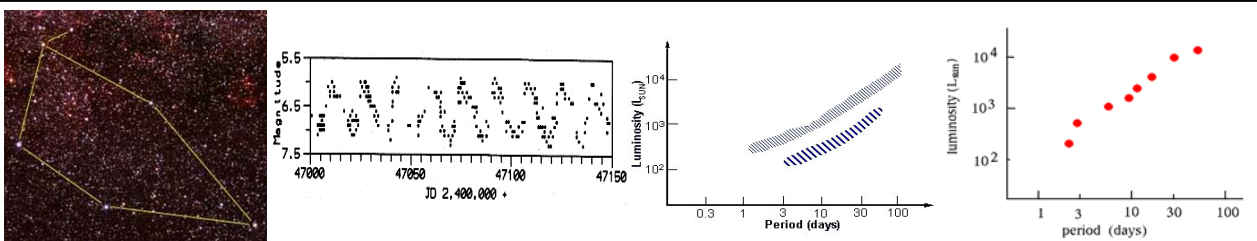
Question C: What is the spectral classification and luminosity of this type of object once it settles down on the main sequence?
F or G Spectral Class; 1 Solar Luminosity

D



Question D: What type of event is shown in this sequence, and what is the final element produced at the collapse?
Type II Supernova (Cataclysmic or eruptive); Iron

E



Question E: What classification of variable star is shown both in this sequence and in sequence A above?
Pulsating Variable Star