

- 5-1 What atmospheric phenomenon is shown in Figure 5A on page 3?
- 5-2 What type of cloud was probably present in the sky at the time of the photograph in Figure 5A on page 3?
- 5-3 What type of cloud produced the atmospheric phenomenon in Figure 5B on page 3?
- 5-4 What is the name of the atmospheric phenomenon shown in Figure 5C on page 4?
- 5-5 In Figure 5D on page 5, a surface weather map for April 12, 2007, what is the air temperature at the station at the center of the high pressure system located in eastern Kansas?
- 5-6 In Figure 5D on page 5, a surface weather map for April 12, 2007, what is the air pressure at the station at the center of the high pressure system located in eastern Kansas?
- 5-7 Is precipitation falling at any of the stations plotted in Figure 5D on page 5?
- 5-8 Figure 5E on page 6 is a water vapor satellite image taken on April 12, 2007. What does the black stripe from New York City through New York State indicate:
- A. Snow on the ground
 - B. High clouds
 - C. Very moist, high water vapor content of the atmosphere
 - D. Dry, extremely low water vapor content of the atmosphere
- 5-9 What type of front lies just off the mid-Atlantic coast (New Jersey, Delaware and Maryland) based on Figure 5E on page 6?
- 5-10 Figure 5F on page 7 is a visible satellite picture of a tropical cyclone in the southern hemisphere off the coast of Madagascar. Viewed from the satellite, the circulation around this cyclone is:
- A. Clockwise
 - B. Counterclockwise
 - C. Variable
- 5-11 Based on the three cell model of the general circulation of the atmosphere, the cyclone should move towards the_____
- A. North
 - B. East
 - C. South
 - D. West

Photographs reprinted with permission from Mike Hollingshead

Figure 5A



Figure 5B



Figure 5 C



Sample Station Plot

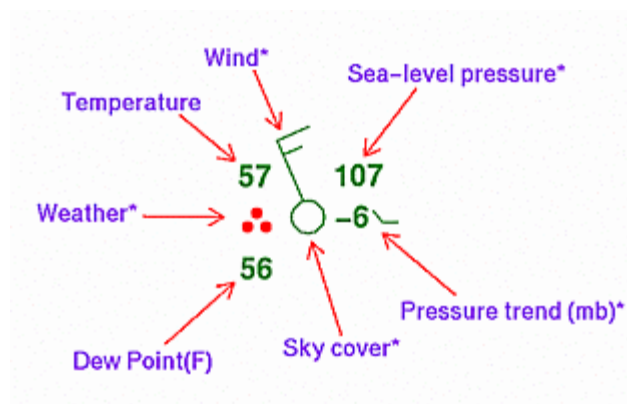


Figure 5D

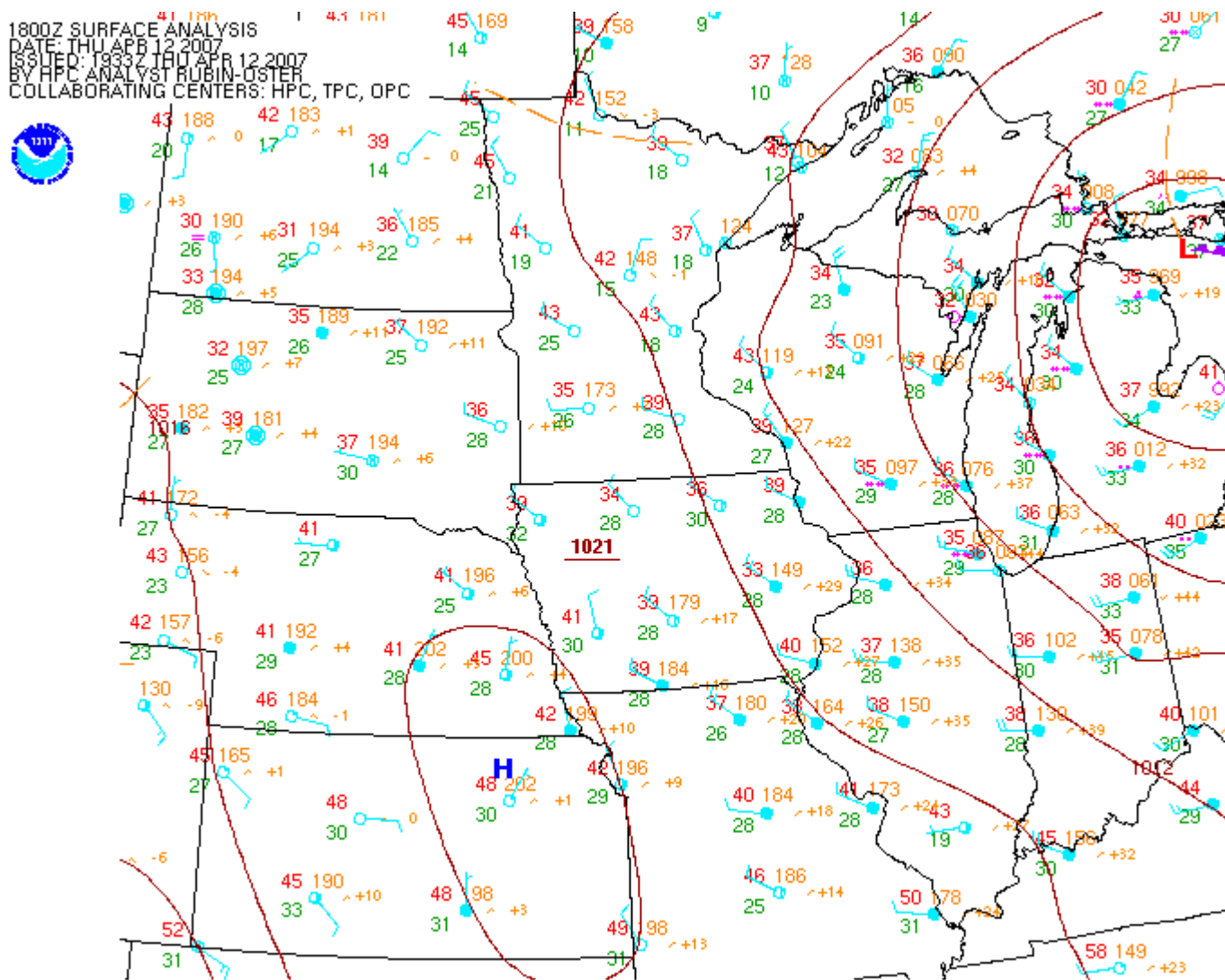


Figure 5E

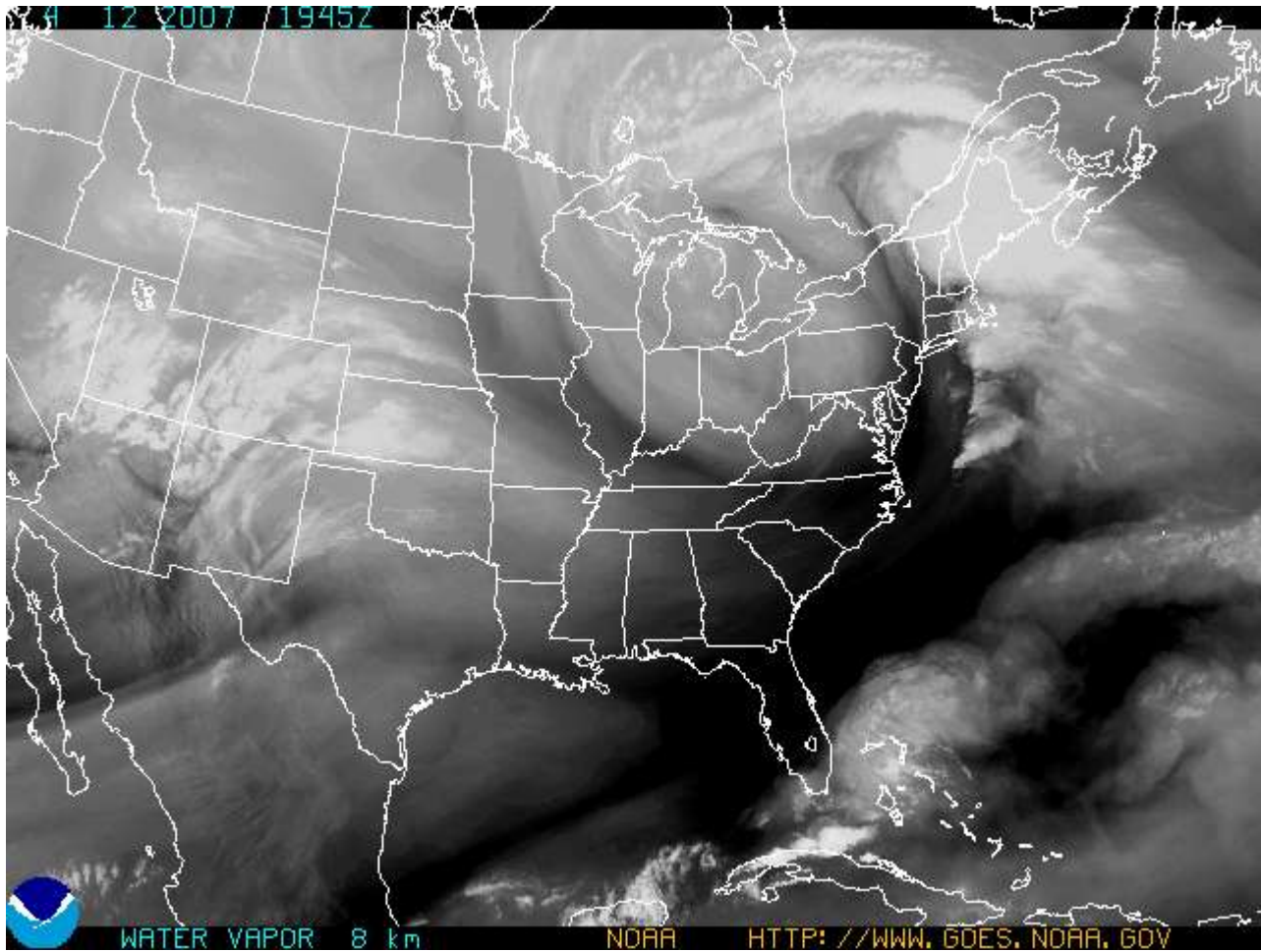


Figure 5F

