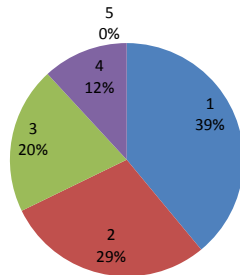


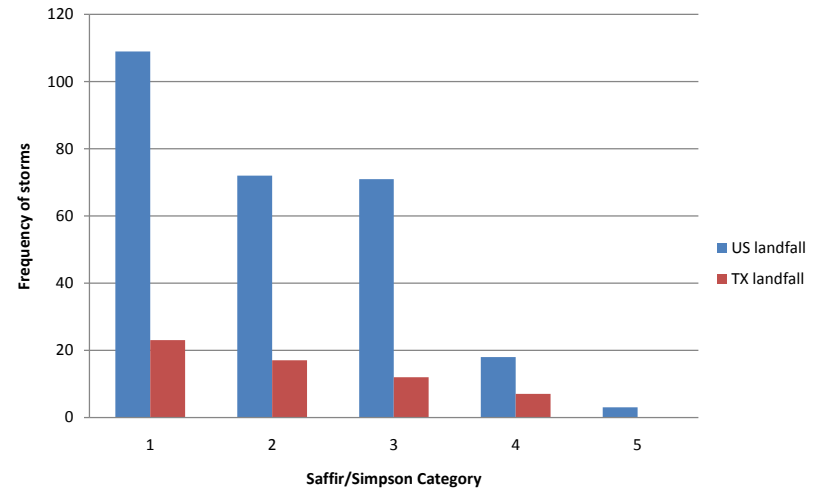
<http://www.nhc.noaa.gov/paststate.shtml>

category	US landfall	TX landfall
1	109	23
2	72	17
3	71	12
4	18	7
5	3	0

**% of storms making TX landfall**



**coastal hits from 1851-2004**



this technically wrong data would indicate a search that resulted in 1900-1996

AREA	Category Number					ALL	MAJOR
	1	2	3	4	5	1,2,3,4,5	3,4,5
U.S. (Texas to Maine)	58	36	47	15	2	158	64
Texas	12	9	9	6	0	36	15